

COMTRAK* FOR RIGHTRAK

*Eliminating the need for the manual WAN connection process!!

Application

PCS Comtrak allows Rightrak software to send information to Fastrak in a matter of seconds, making communication between the district and the school in **real time**. Also automates communication after the day end process.

Comtrak automates online payments and updates to students' accounts.

Updates made in Rightrak, such as

- ✓ New Students
- ✓ Closed Students
- ✓ Changes to Student Records
- ✓ PayPAMS deposits
- ✓ Money transfers when moving schools
- ✓ Deposits at the Central Office
- ✓ Adjustments from the Central Office
- ✓ Eligibility Changes -F/R applications

are imported and processed in Fastrak instantaneously, even during a meal session.

Also Great for Visiting Students and Staff!

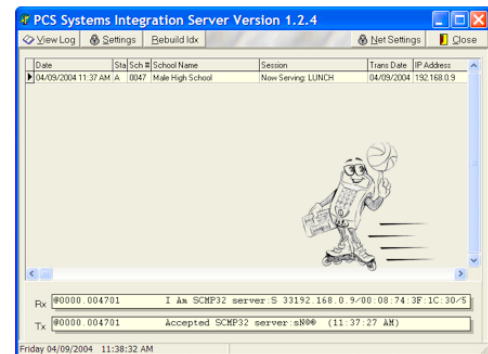
Student Mobility feature included with Comtrak allows access to an account at a "Home" school from any other school in the District.

Features

- ✓ Audit Secure
- ✓ One Account, One ID Number
- ✓ Comprehensive Reporting Capabilities
- ✓ Utilize "Home School" Eligibility and Balance
- ✓ Make Payments to "Home School" Account

Benefits

- ✓ Ease of Use
- ✓ Maximize Reimbursements
- ✓ Allows for Substitute Teacher Access
- ✓ Integrates with FASTRAK School software for
- ✓ Audit Trails, Letters, Custom Reports, etc.



Minimum Application Requirements

RIGHTRAK COMMUNICATION AGENT	
PCS Software	RIGHTRAK, FASTRAK
POS Terminal requires Ethernet con. to Fastrak	
Workstation	
Processor	Pentium II 500 MHz or equivalent
Operating System	NT/2000/XP/XPpro
Memory	128 MB
Hard Drive	3 GB (program only)
Drive	CD-ROM drive
Network	10/100 Network Card, TCP/IP, IPX/SPX
Remote Diagnostics	Citrix WAN Connection
Server	
Processor	Pentium II 500 MHz or equiv.
Memory	256 MB
Hard Drive	4 GB for installation and 20 MB per school
Network	10/100 Network Card, TCP/IP, IPX/SPX
Remote Diagnostics	Citrix WAN Connection
Part Number	117RTSMDA